

# Real

Real 1

**Chorus**

G Em<sup>7</sup> C(add2)

You live a - bove this earth of mine You stand un - touched by end

D G Em<sup>7</sup> C(add2)

less time for choo - sing what I think and feel - - Your love is the on

D Last x To Coda G D<sup>6</sup> Cmaj<sup>7</sup> C G D<sup>6</sup> Cmaj<sup>7</sup> C

- ly love that's real

One

1. Lord no  
2. All the  
3. Lord I

**Verse**

G D<sup>6</sup> Cmaj<sup>7</sup> C G D<sup>6</sup> Cmaj<sup>7</sup> C

Mat - ter where I am ne - ver far from Your great hand Lord no  
trou - bles of this life won't com - pare to what I find when I  
trust in things not seen this is faith in what it means to be

G D<sup>6</sup> Cmaj<sup>7</sup> C G D<sup>6</sup> Cmaj<sup>7</sup> C

mat - ter where I go I'm ne - ver far a - way from home Lord Your  
look in - to Your face and this world will melt a - way and I  
sure of what we hope\_for and the pro - mise of a new\_world it's not

1. G D<sup>6</sup> Cmaj<sup>7</sup> C G Cmaj<sup>7</sup> C

pre - sence fills this earth and all Cre - a - tion is Your work You have

G D<sup>6</sup> Cmaj<sup>7</sup> C G D<sup>6</sup> C  
 formed this heart of mine and ev-ery breath I breathe will cry Your heart.

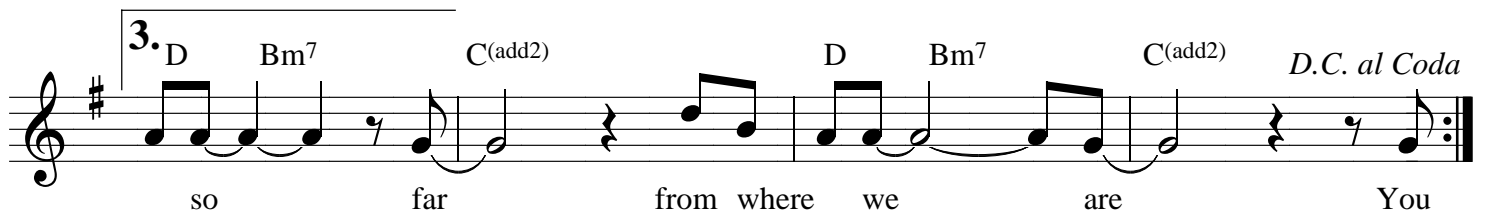
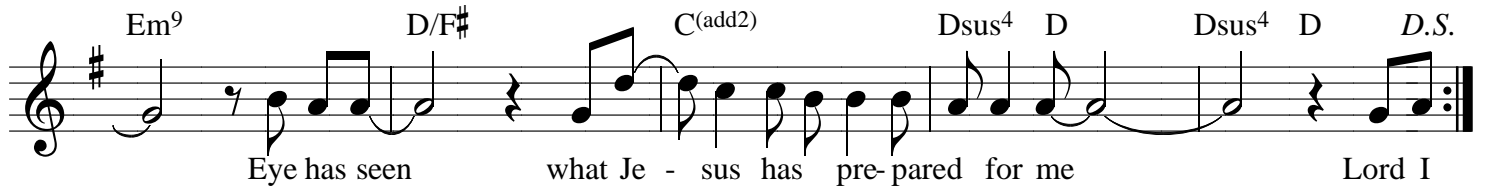
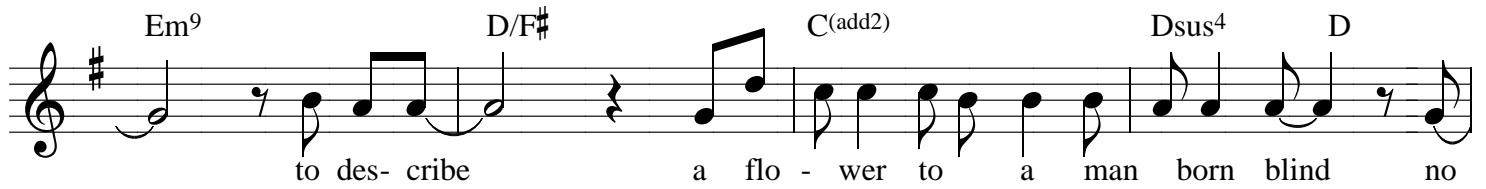
D Bm<sup>7</sup> C(add2) D Bm<sup>7</sup> C(add2) D.C.  
 — for me and Your mer - - cy You

2. D Bm<sup>7</sup> C(add2) D Bm<sup>7</sup> C(add2)  
 can -not wait to be - - - a wake You

G Em<sup>7</sup> C(add2) D  
 live a - bove this earth of mine You stand un - touched by end - less time for choo

G Em<sup>7</sup> C(add2) D  
 -- sing what I think and feel — Your love is the on - ly love that's real

G D<sup>6</sup> Cmaj<sup>7</sup> C G D<sup>6</sup> Cmaj<sup>7</sup> C  
 Try

**Chorus**

Coda

